

3-4 HOURS

SITE VISIT SEISMIC MONITORING

Seismometers, SLV Sources, Communications

Exploring source and receiver technology for seismic/PGA monitoring & CO₂ plume front monitoring — a fully hands-on field experience.

NEEDVILLE, TX

29.347626° -95.893456°

What to Expect

Walking tour of various types of live seismic stations (~1 mile)

Shake the ground with SLV solar seismic source

Simulated marshland monitoring solutions

Real-time data demonstrations

Off-grid 3-phase power

Live USGS/IRIS station

Remote station health monitoring

Hybrid sensors for ghost suppression

DAS/Optical ready trenched fiber

Helical anchor materials and discussion

LUNCH INCLUDED

FAST INTERNET ACCESS
FOR ALL VISITORS

PPE: STURDY FOOTWEAR
REQUIRED ONLY

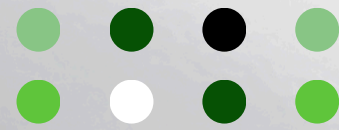
NO FORMAL RESTROOMS

Recommended: sunscreen/insect repellent

ACTIVE & PASSIVE

SensEra





SITE VISIT INSTRUCTIONS

Seismometers, SLV Sources, Communications

NEEDVILLE, TX

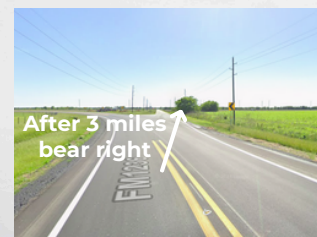
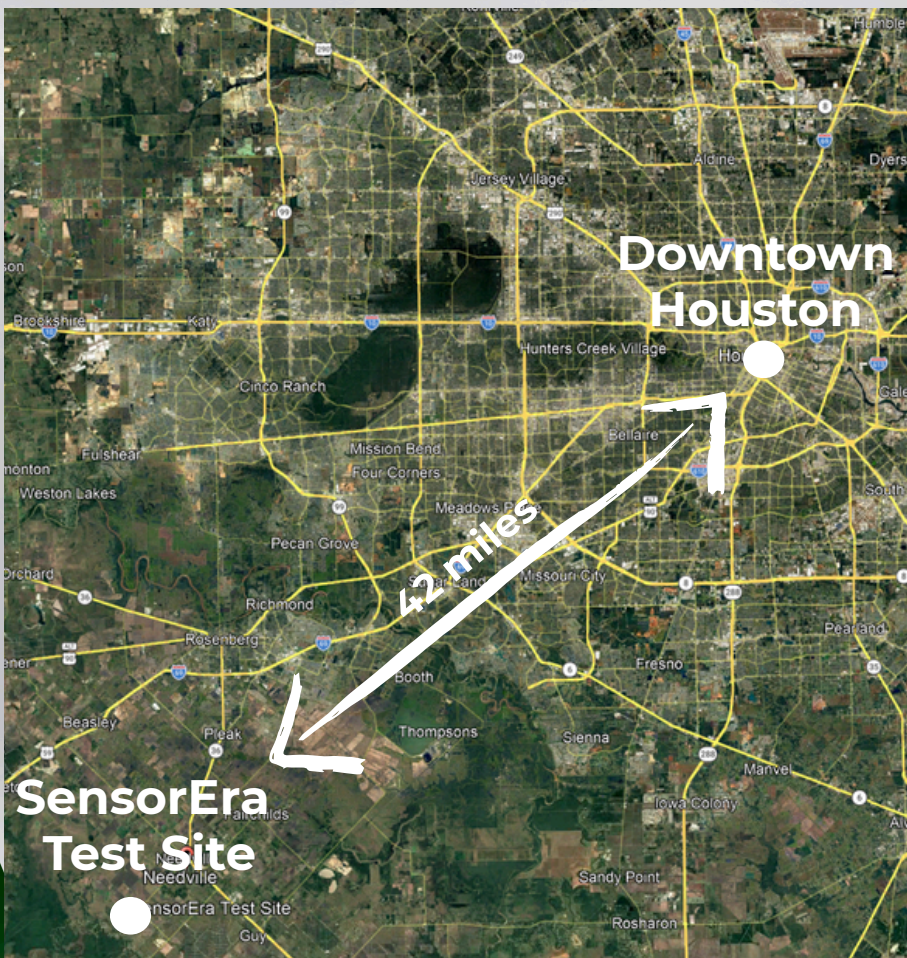
29.347626° -95.893456°



Nick: +1 281 610 7275

Tianrun: +1 617 519 6629

George: +1 281 513 4868



Use coordinates & Google Maps!

SensEra

- Site is a 50-acre private field and is used for raising cows. Animals may be in close proximity.
- Strong boots or walking waterproof shoes are recommended, mud/dust can be expected.
- No other PPE will be required. Shorts are not recommended
- The ground is very uneven, expect small shrub trip hazards.
- Step count distance ~1 mile. Disability assistance – if required, AWD vehicle is available for transport
- Suggest insect repellent and sunscreen
- Wi-Fi network is available (for any urgent meetings)
- Lunch will be provided
- There are no restrooms at the site (but plenty of wooded areas)
- Entrance has gravel path - any vehicle can enter safely

