

Monitor Your Assets
With Confidence

Monitor dynamic changes in the subsurface daily with our proprietary Surface Linear Vibrator (SLV) permanent, remotely-operated seismic sources

CARBON STORAGE

SPARSE SEISMIC

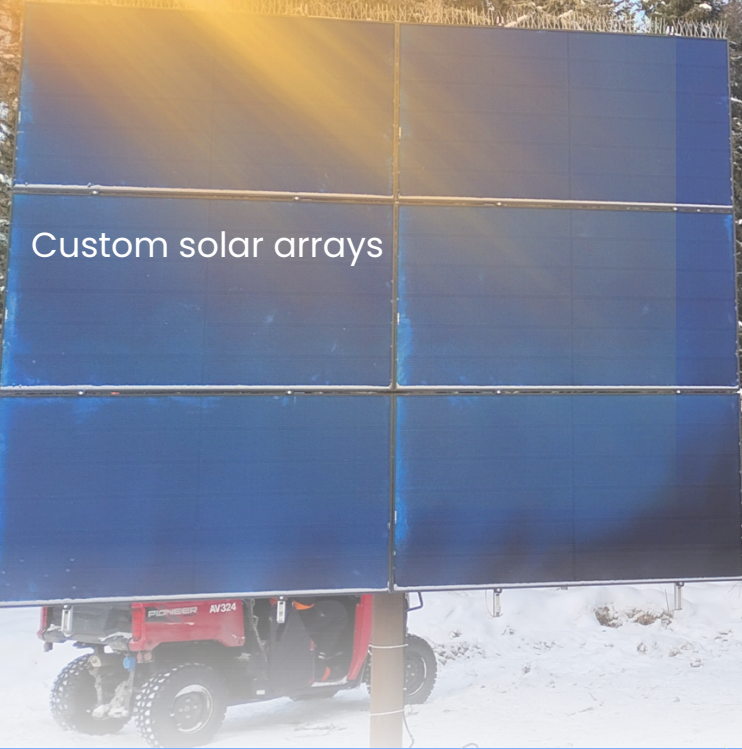
DAS/GEOPHONE VSP

SMART SOURCES



- ✓ Linear P-Wave Output
- ✓ Linear and customized sweeps
- ✓ Remotely Operated
- ✓ Solar or grid powered
- ✓ Land or transition zone
- ✓ Record with SeismicityAlert stations and downhole DAS/Geophones
- ✓ High repeatability

Benchmarked against vibroseis and rapid to deploy, enhance the temporal resolution of dynamic changes in the subsurface with our permanent seismic sources.



Custom solar arrays

Off-grid 3-phase power and SLV seismic source



SLV source monitor sensor

Parameter	Units	LV11K-100S	LV4K-200S
Frequency Range	Hz	0 - 100	0 - 200
Force Generated	Pounds -Force	>11,000	>4,200
Dimensions	Inches	24(L) x 24(W) x 10(H)	12 (length) x 9 (dia)
Weight	Pounds	275 (incl. base plate)	32
System Power Requirements	volts/Hz	480V, 3 Phase/50-60	240V, 3 Phase/50-60
Maximum Power (Continuous)	kW	4.4	2.6
Maximum Current	Amps	8 (@480V)	8 (@240V)
Max. Run Time in Air (Source)	Seconds	No Limit	60 (2 min. wait between runs)
Source Max. Duty Cycle	%	100	33
Operating Temperature (Electronics)	Degrees F	20 - 120+	20 - 120+
Operating Temperature (Source Module)	Degrees F	5 - 105	-20 to +125+

More Information at
www.gpusa-ca.com
www.sensorera.tech

