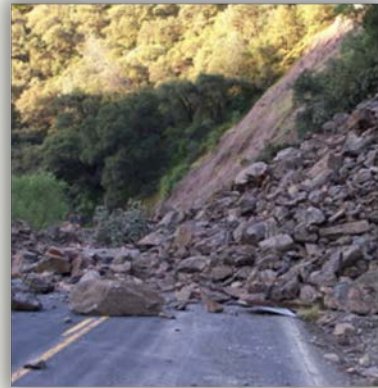


Geo-Technical Application Examples

Antenna

Slope Stability

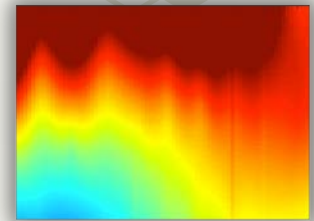
- Monitoring of embankments
- Long-term levee monitoring
- Stabilization planning
- Mining waste safety (scree slope)
- Volcano stability



Battery

Shallow Voids and Buried Objects

- Subsurface velocity anomalies
- Karst identification
- Buried pipe search
- Subsurface void surveying



6C Sensor

Infrastructure Planning

- Construction site stability
- Building stability
- Legacy bridge monitoring
- New bridge planning



Natural Hazards

- Coastal erosion monitoring
- Volcano-related seismicity

